

JURNAL CITA HUKUM

Indonesian Law Journal



- **Understanding Violent Religious Behavior in Indonesia: From the Concept to the Prevention**
Dana Riksa Buana, Oleg Valeryevich Lukyanov (Tomsk, Russian Federation)
- **The Direction of Police Community Policy In The Prevention of Traffic Accidents In Polda Metro Jaya**
Rudi Antariksawan, Muhammad Mustofa (Jakarta, Indonesia)
- **Investigating the Injuries of Murder in Prohibition in Iranian Laws**
Jahangir Mirmohamadi & Hamidreza Adabi. (Islamic Republic of Iran)
- **The Management of Conflict Resolution On Labor Wages**
Sarwani, RR. Dewi Anggraeni & Annissa Rezki. (Pamulang, Indonesia)
- **The Application of the Strict Liability Principle in The Indemnity Laws for Livelihoods in Indonesia; Analysis of The Supreme Court's Decision Number 1794K/PDT/G/2004**
Ahmad Tholabi Kharlie. (Jakarta, Indonesia)
- **Settlement Through Mediation Between the Normative and Practice in Religious Judiciary Agencies**
Karmawan & Masykuri Abdillah. (Banten, Indonesia)
- **The Impact of Regulation Policy In Indonesia Against Women's Family Head**
Ana Kuswanti, Amiruddin Saleh, Aida Vitayala S Hubeis, Herien Puspitawati & Munadhil Abdul Muqsith. (Bogor, Indonesia)
- **Conceptualization and Problems in the Implementation of Fostered Children's Health Services to Support The Progressiveness of the Child Criminal Justice System in Tangerang Children's Penitentiary**
Alfitra & Ali Mansur. (Jakarta, Indonesia)
- **Implication of Law Number 23 of 2011 On Zakat Institution Governance Based On Sharia Quality Management Principles; A Case Study in Baznas of Jambi Province**
Muhammad Zaki, Amiur Nuruddin, Saparuddin Siregar. (Jambi & Medan, Indonesia)
- **Indonesian State Owned Enterprises (BUMN or SOEs) and the Urgency of Implementation of Principle of 'Business Judgment Rule'**
Teuku Syahrul Ansari, Herdi Sahrasad & Irfan Iryadi. (Semarang & Jakarta, Indonesia)
- **Understanding the Rights of Wife in The Law Number 1 of 1974 About Marriage Among the Terrorist Wives in Central Java**
Rosdiana & Hotnidah Nasution. (Jakarta, Indonesia)
- **Государственное регулирование закупок учебного оборудования и инфраструктуры в школах (Government Regulation in the Procurement of Teaching Facilities and Infrastructures in Schools)**
Zaharah & Galia Ildusovna Kirilova. (Kazan, Russian Federation)

Volume 8 Number 1 (2020)

Jurnal

CITA HUKUM

VOLUME 8 NUMBER 1 (2020)

JURNAL CITA HUKUM is Indonesian Law Journal published by Faculty of Sharia and Law, State Islamic University Syarif Hidayatullah Jakarta in Associate with Center for Study of Indonesian Constitution and Legislation (POSKO-LEGNAS) UIN Jakarta. This journal specializes in Legal Studies and try to present various results of the latest and high-quality scientific research.

As an International Journal, all articles must be written in **English** or **Russian**,

because they will be read online by millions of readers, both speakers of English and Russian.

JURNAL CITA HUKUM has been indexed at **Web of Science** (WOS) Web of Science (WOS) or Emerging Source Citation Index (ESCI) Clarivate Analytics, **DOAJ**, **EBSCO**, **DIMENSION**, **Microsoft Academic Search**, and **SINTA 2** and become a **CrossRef** Member since year 2015. Therefore, all articles published by **JURNAL CITA HUKUM** will have unique DOI number.

INTERNATIONAL EDITORIAL BOARD

Prof. Carolyn Sappideen, Scopus ID: 6506771331 School of Law Western Sydney University, Australia
Prof. Alexander Fedorovich Malyy, Scopus Id: 57194874834, Department of Constitutional Law, Kazan Federal University, Russian Federation
Prof. Razeen Sappideen, Scopus ID: 14041008300 School of Law Western Sydney University, Australia
Prof. Stefan Koos, Bundeswehr University Munich
Prof. Muhammad Munir, Scopus ID: 54414595100, Department of Law, International Islamic University Islamabad, Pakistan
Prof. Euis Nurlaelawati, Scopus ID: 56247081700, Faculty of Sharia and Law, State Islamic University (UIN) Sunan Kalijaga Yogyakarta
Prof. Abdul Gani Abdullah, Universitas Islam Negeri Syarif Hidayatullah Jakarta
Prof. Salman Maggalatung, Center for the Study of Constitution and National Legislation (POSKOLEGNAS), Indonesia
Prof. Asep Saepudin Jahar, Scopus ID: 57156653300, Department of Economic Law Universitas Islam Negeri Syarif Hidayatullah Jakarta
Assoc. Prof. Ahmad Tholabi Kharlie, Thomson Reuters Id: R-5028-2017, Department of Family Law, Faculty of Sharia and Law, Universitas Islam Negeri Syarif Hidayatullah Jakarta

EDITOR IN CHIEF

Nur Rohim Yunus, Scopus ID: 57216167775, Thomson Reuters Researcher ID: F-3477-2017, ORCID ID: 0000-0003-27821266, SSRN ID: 2645355, SINTA ID: 5975443, Department of Constitutional Law, UIN Syarif Hidayatullah Jakarta, Indonesia

MANAGING EDITOR

Muhammad Ishar Helmi, Scopus ID: 57214681602, Department of Criminal Law Faculty of Sharia and Law Universitas Islam Negeri Syarif Hidayatullah Jakarta, Indonesia.

EDITORS

Indra Rahmatullah, Scopus ID: 57215568835, Department of Economic Law, Faculty of Sharia and Law Universitas Islam Negeri Syarif Hidayatullah Jakarta, Indonesia.
Fitria Fitria, ORCID ID: 0000-0001-9733-1233, Department of International Law, York Law School, University of York, UK, United Kingdom.
Mara Sutan Rambe, ORCID ID: 0000-0001-5404-6635, SINTA ID: 6200494, Department Criminal Law, Faculty of Law, UIN Syarif Hidayatullah Jakarta, Indonesia.
Erwin Hikmatiar, Thomson Reuters Researcher ID: F-3235-2017, ORCID ID: 0000-0003-4103-818X, SINTA ID: 6200141, Center for The Study of Constitution and National Legislation (POSKOLEGNAS), UIN Jakarta.
Arip Purkon, ORCID ID: 0000-0002-6195-9384, Department of Law, University of Malaya, Malaysia.

LANGUAGE EDITOR (ENGLISH AND RUSSIA)

Raisa Shahrestani, Belgorodsky State University, Russia.
Firsty Izzata Bella, Airlangga University, Surabaya, Indonesia.

ASSISTANT TO THE EDITORS

Imas Novita Juaningsih, State Islamic University (UIN) Syarif Hidayatullah Jakarta, Indonesia.
Rezky Panji Perdana Martua Hasibuan, State Islamic University (UIN) Syarif Hidayatullah Jakarta, Indonesia.
Azizah Ratu Buana, State Islamic University (UIN) Syarif Hidayatullah Jakarta, Indonesia.

Redaktur Office

Faculty of Sharia and Law UIN Syarif Hidayatullah Jakarta
Street Ir. H. Juanda 95 Ciputat Jakarta 15412
Phone. (62-21) 74711537, Faks. (62-21) 7491821
Website: www.fsh-uinjkt.net, E-mail: jurnal.citahukum@uinjkt.ac.id.
Link: <http://journal.uinjkt.ac.id/index.php/citahukum>

TABLE OF CONTENTS

Understanding Violent Religious Behavior in Indonesia: From the Concept to the Prevention Dana Riksa Buana, Oleg Valeryevich Lukyanov	1-16
The Direction of Police Community Policy In The Prevention of Traffic Accidents In Polda Metro Jaya Rudi Antariksawan, Muhammad Mustofa	17-32
Investigating the Injuries of Murder in Prohibition in Iranian Laws Jahangir Mirmohamadi, Hamidreza Adabi	33-50
The Management of Conflict Resolution On Labor Wages Sarwani, RR. Dewi Anggraeni, Annissa Rezki	51-64
The Application of the Strict Liability Principle in The Indemnity Laws for Livelihoods in Indonesia; Analysis of The Supreme Court's Decision Number 1794K/PDT/G/2004 Ahmad Tholabi Kharlie	65-84
Settlement Through Mediation Between the Normative and Practice in Religious Judiciary Agencies Karmawan, Masykuri Abdillah	85-102
The Impact of Regulation Policy In Indonesia Against Women's Family Head Ana Kuswanti, Amiruddin Saleh, Aida Vitayala S Hubeis, Herien Puspitawati, Munadhil Abdul Muqsih	103-122
Conceptualization and Problems in the Implementation of Fostered Children's Health Services to Support The Progressiveness of the Child Criminal Justice System in Tangerang Children's Penitentiary Alfitra, Ali Mansur	123-144
Implication of Law Number 23 of 2011 On Zakat Institution Governance Based On Sharia Quality Management Principles; A Case Study in Baznas of Jambi Province Muhammad Zaki, Amiur Nuruddin, Saparuddin Siregar	145-162
Indonesian State Owned Enterprises (BUMN or SOEs) and the Urgency of Implementation of Principle of 'Business Judgment Rule' Teuku Syahrul Ansari, Herdi Sahrasad, Irfan Iryadi	163-182
Understanding the Rights of Wife in The Law Number 1 of 1974 About Marriage Among the Terrorist Wives in Central Java Rosdiana, Hotnidah Nasution	183-212
Государственное регулирование закупок учебного оборудования и инфраструктуры в школах (Government Regulation in the Procurement of Teaching Facilities and Infrastructures in Schools) Zaharah, Galia Ildusovna Kirilova	213-230

The Impact of Regulation Policy in Indonesia Against Women's Family Head*

Ana Kuswanti,¹ Amiruddin Saleh,² Aida Vitayala S Hubeis,³
Herien Puspitawati,⁴ Munadhil Abdul Muqsith⁵

Communication Study Program of Agricultural and Rural Development of
IPB University, Bogor, Indonesia



[10.15408/jch.v8i1.14264](https://doi.org/10.15408/jch.v8i1.14264)

Abstract.

The female head of the family has a dual role, that is, a housewife and breadwinner to meet family needs. The study aims to analyze the effect of female head of household characteristics and group characteristics on participatory communication of groups and economic independence of women household heads. Respondents were Pekka groups in twelve villages in Batang City, Central Java, as many as 229 heads of households aged 22-74 years. The characteristics measured include 5 dimensions namely: age, education, marital status, number of dependents, and income. Data were analyzed descriptively and multiple linear regression testing was carried out. The results showed that there was a direct positive effect on the characteristics of female household heads in participatory communication and the economic independence of female household heads. and there is a direct negative effect on group characteristics on participatory communication and the economic independence of the female household head

Keywords: regulation effect, female head of a family, Pekka group, economic independence

* Received: July 19, 2019, revised: August 21, 2019, accepted: August 1, 2019, Published: December 18, 2019.

¹ **Ana Kuswanti** is a lecturer at Communication Study Program of Agricultural and Rural Development of IPB University.

² **Amiruddin Saleh** is a lecturer at Faculty of Human Ecology, IPB University, Bogor.

³ **Aida Vitayala S Hubeis** is a lecturer at Faculty of Human Ecology, IPB University, Bogor.

⁴ **Herien Puspitawati** is a lecturer at Faculty of Human Ecology, IPB University, Bogor.

⁵ **Munadhil Abdul Muqsith** is a Lecturer at Universitas Pembangunan Nasional Veteran, Jakarta.

*Corresponding Author E-mail: anakuswanti@upnvj.ac.id

Dampak Kebijakan Regulasi di Indonesia Terhadap Kepala Keluarga Wanita

Abstrak.

Kepala keluarga perempuan memiliki peran ganda, yaitu, seorang ibu rumah tangga dan pencari nafkah untuk memenuhi kebutuhan keluarga. Penelitian ini bertujuan untuk menganalisis pengaruh karakteristik kepala rumah tangga perempuan dan karakteristik kelompok terhadap komunikasi partisipatif kelompok dan kemandirian ekonomi kepala rumah tangga perempuan. Responden adalah kelompok Pekka di dua belas desa di Kota Batang, Jawa Tengah, sebanyak 229 kepala keluarga berusia 22-74 tahun. Karakteristik yang diukur meliputi 5 dimensi yaitu: usia, pendidikan, status perkawinan, jumlah tanggungan, dan pendapatan. Data dianalisis secara deskriptif dan dilakukan uji regresi linier berganda. Hasil penelitian menunjukkan bahwa ada pengaruh positif langsung pada karakteristik kepala rumah tangga perempuan dalam komunikasi partisipatif dan kemandirian ekonomi kepala rumah tangga perempuan. Selain itu, ada efek negatif langsung pada karakteristik kelompok pada komunikasi partisipatif dan kemandirian ekonomi kepala rumah tangga perempuan

Kata kunci: efek regulasi, kepala keluarga wanita, kelompok Pekka, kemandirian ekonomi

Влияние политики регулирования в Индонезии к женщинам как главам семьи

Аннотация.

Женщина как глава семьи играет двойную роль, то есть роль домохозяйки и кормильца семьи. Цель исследования - проанализировать влияние характеристики женщин как главы семьи и групповой характеристики на групповое совместное общение и экономическую независимость женщин как главы семьи. Респондентой была группа Pekka (Полномочия семей с женщинами как главами семьи) в двенадцати деревнях в городе Батанг, в Центральной Яве, 229 глав семьи в возрасте 22-74 лет. Измеренные характеристики включают 5 параметров, а именно: возраст, образование, семейное положение, количество иждивенцев и доход. Данные были проанализированы описательно, и было проведено множественное линейное регрессионное тестирование. Результаты показали, что непосредственное положительное влияние оказали характеристики женщин как глава семьи в совместном общении и экономической независимости. Кроме того, существует прямое негативное влияние на групповые характеристики на совместное общение и экономическую независимость женщин как глав семьи.

Ключевые слова: Эффект регулирования, Женщина как глава семьи, Группа Pekka, Экономическая независимость.

Introduction

The national secretariat of female heads of household sees indications that one of the poorest groups of people who are slow to break down poverty is a family headed by women. Based on Marriage Law Number 1 of 1974, Article 31, Paragraph 3, which states that "The husband is the head of the family and the wife of the housewife." Both of these causes the existence of women as head of the household and head of the family not fully recognized, both in the applicable legal system and in the social life of the community. As a result, the existence of female heads of households tends to be "invisible," not actually counted, and does not appear in actual numbers in statistical data. This is a weakness that has the potential to cause the exclusion of women from various poverty reduction efforts undertaken both by the government and by non-governmental organizations (NGOs).

Astuti (Astuti, 2014) states that households that are headed by women are generally in a state of deficiency. There are obstacles to meeting the basic needs of the family. There is a limited ability to obtain income to meet the needs of family members. Especially if they are in poor condition, they will experience difficulties in meeting the needs of a more decent life. Therefore, the development of human resources, especially women in terms of arousing the power of thought, critical power, confidence, and being able to take decisions on the problems faced, it is important to do so that women can become independent both mentally and financially, in meeting the needs of life his family.

Women's development is an urgency, as an integral part of national development and development programs in alleviating poverty. Hubeis (Hubeis, 2010) states that it is time for women to participate in the development, but society considers that by nature, women are still demanded that all work be carried out independently and alone by women. Fostering the potential and independence of the community is hopes will grow awareness to gain full power in determining the future (Suhaimi, 2016).

Women who have a dual role as housewives and at the same time become breadwinners make Pekka must be able to carry out their responsibilities in caring for, educating children and meeting all their family needs. In fact, women as family heads face obstacles in aspects of business, commerce, and social relations. A conscious effort must be made to improve conditions, build economic independence. Considering that conditions are still found in the community, Pekka with an economy below the poverty line, this is supported by the results of Wibawa and Wihartanti's research (Wibawa &

Wihartanti, 2018) suggesting that the economic independence of women-headed households will soon be achieved, if there are various accesses to support business development, skills development, and have autonomy to make decisions with an awareness of equality and justice.

It is starting from the Pekka program, which organized its activities, where the role of women as head of the family in carrying out family functions, there was a lack of assertiveness in educating children, and the difficulty in allocating time to socialize in the community (Saputri, 2016). On the other hand, there are women as supporters of the husband's breadwinner, who have a contribution to help the family's economy in earning income, so having independence in the economy can even sustain family needs (Djazimah & Habudin, 2016). The role of women in household heads is capable of carrying out food security (Sasmita, 2011).

Batang City is one of the expansion areas of the central Pekka program; currently, it is still focused on empowering female heads of households. Based on World Bank data, extreme poverty was below 8.6 percent in 2018, the lowest percentage of people living in global poverty has dropped to 10 percent in 2015 (Andreas, 2018). The poverty rate in Batang Regency for 2017-2018 shows 10.80 percent, and the poverty rate for women is 6.48 percent (Badan Pusat Statistik Kabupaten Batang, 2018). The decline in these conditions creates a gap in the standard of living of the people, so poverty action is needed.

Research becomes essential to see how participatory communication and processes as activities and coherence are among group members involved in the underdeveloped Pekka program in Batang, Central Java. An appropriate model of economic empowerment communication is needed in the Pekka program, which will make women an essential element in supporting development in Batang District. The empowerment communication model that is designed must pay attention to aspects inherent in the community, especially Pekka groups, as the target of program communication, which includes input, process, and output.

In addition, research is considered essential because the results can be used as a reference in understanding the differences in communication of economic empowerment for female heads of household and proper participatory group communication methods to help in realizing economic independence that has not been mentioned in previous studies. The results obtained illustrate the influence of group characteristics on participatory group communication and Pekka's economic independence. Further results showed that there was no significant influence between the characteristics of women-

headed household groups in participatory communication and the economic independence of women-headed household groups.

Based on the explanation above, the study aims to: (1) describe the characteristics of female household heads in Batang City. (2) analyze the effect of Pekka characteristics and Pekka group characteristics, on participatory communication and economic independence of Pekka families.

Method

Research using quantitative research methods in one study to understand research, quantitative research is intended to be strengthened with qualitative analysis to provide a better understanding of research problems and questions, rather than just using one method alone (Creswell, 2010). Retrieval of quantitative data using survey methods. A survey, according to Singarimbun and Effendy (Singarimbun & Effendy, 2002), is a study that takes a sample from one population and uses a questionnaire as a primary data collection tool. Survey research design uses research methods with hypothesis testing (researchers explain the relationship between variables) or is called explanatory research.

Research methods based on quantitative positivism paradigm are strengthened by qualitative methods so that they become post-positivism, used to examine populations of samples, sampling techniques are generally conducted randomly, research with research instruments, quantitative or statistical data analysis with the aim to test established research hypotheses (Sugiyono, 2013).

The research design is in accordance with the opinions of Singarimbun and Effendy (Singarimbun & Effendy, 2002) explanatory research (explanatory research) is explanatory research that highlights the causal relationship between the research variables and tests the hypothesis that has been formulated previously. This kind of research in descriptive also contains descriptions, but the focus is on the relationship between variables. But in this study only looked at the relationship between variables, as well as testing the relationship of research hypotheses.

Quantitative data were obtained from primary data, which included: (1) Pekka characteristics; (2) characteristics of Pekka groups; (3) participatory communication; and (4) Economic independence. Primary data is obtained by filling out a questionnaire conducted by Pekka groups themselves. The research

instrument was divided into two parts. First, questions related to Pekka group's characteristics related to age, education, marital status, number of dependents, and income. Secondly, questions about the characteristics of Pekka groups by looking at information access, the role of Pekka groups, the role of management, the role of cadres, the role of assistants. Third, questions about participatory communication by looking at the ability to provide ideas and ideas, dialogue, the intensity of the discussion, the direction of communication, how to solve problems, and the role of leadership. Fourth, questions about the independence of the Pekka economy by looking at the ability to meet the needs of life, the ability of productive businesses, the ability to overcome problems, and the ability to make decisions have been tested for validity and reliability. An instrument using a Likert scale starting from (1) Never, (2) Sometimes, (3) Often, (4) Always.

The reliability test results on each indicator showed the Cronbach alpha value as follows: information access indicators (34 questions; alpha Cronbach = 0.761), group role indicators (15 questions; alpha Cronbach = 0.765), indicators of the administrator's role (17 questions; alpha Cronbach = 0.745), cadre role indicator (17 questions; alpha Cronbach = 0.757), companion role indicator; alpha Cronbach = 0.752) and participative communication with the value of each indicator of ideas and ideas (6 questions; alpha Cronbach = 0.742), dialogical indicators (6 questions; alpha Cronbach = 0.726), indicators of discussion intensity; alpha Cronbach = 0.759), indicators of the direction of communication (6 questions; alpha Cronbach = 0.741), indicators of how to solve problems (6 questions; alpha Cronbach = 0.805), indicators of leadership roles (6 questions; alpha Cronbach = 0.7711) and variables of independence Pekka economy with the value of each indicator of the ability to meet the needs of life (6 questions; alpha Cronbach = 0.780), indicators of productive business ability (6 questions; alpha Cronbach = 0.790), indicators of problem solving (6 questions; alpha Cronbach = 0.756), indicators decision making ability (6 questions; alpha Cronbach = 0.791) it can be said that the instruments used are very reliable.

Data were analyzed using the SPSS version 22.0 program. And LISREL 8.8 The analysis used in the study are (1) descriptive analysis to explain the characteristics of Pekka (2) SEM analysis, to examine the influence of the independent variables on the dependent variable, namely: the effect of female head of household characteristics and group characteristics on participatory group communication and independence Pekka's economy; the influence of participatory communication of Pekka's economic empowerment groups; and

the effect of group participatory communication and economic empowerment on Pekka's economic independence.

Results And Discussion

Women are the grassroots and key in development, where there are families headed by women in conditions of poverty. Therefore Pekka is a strategic program. Pekka is one of the manifestations of efforts to reduce poverty by women. Conditions in which families are headed by women.

Women are able to carry out roles and responsibilities as the main breadwinner, take care of the household, manage the continuity of family life, and as decision-makers in their families. In principle, the role of Pekka as a more dominant implementer is as the main respondent who has a core position in order to support the family.

Batang City is one of the expansion areas of Pekka. The condition of the trunk area there are many women become the backbone of the family. His role as the main breadwinner is a demand because of circumstances where there are conditions because the husband does not have a permanent job, the lack of a husband's sense of responsibility in carrying out his obligations as a breadwinner, so he relies more on his wife. Limited insight and lack of broad mindset to move forward, making them less able to take advantage of opportunities to find work. Do not have the courage to try new jobs so that they can continue working to meet the needs of their family life.

Batang City Pekka has a Pekka center as their place of activities. It has a coverage area consisting of 12 villages in two subdistricts and consists of 15 Pekka groups. Pekka activities are strongly encouraged by the participatory communication of members in each Pekka group. The purpose of Pekka's presence in Batang City is to assist government programs in alleviating poverty in unreachable areas so that Pekka seeks to implement it through programs created by Pekka.

Pekka tries to dedicate its programs by forming Pekka groups through participatory communication groups. The goal is to have a group so that it is easier to control and be able to see its development because it is easy to identify the group members, which groups are considered active and not active so that the evaluation is easy to carry out.

Characteristics of Respondents Female head of household

The results of research on the identity of Pekka respondents consisted of age, education, marital status, number of family dependents, and income.

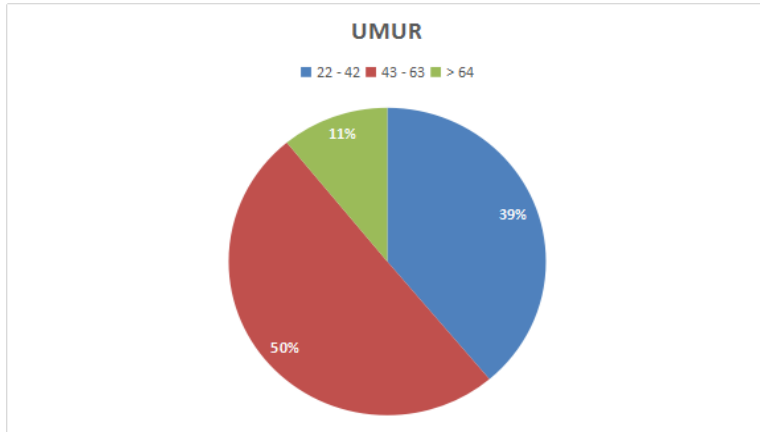


Figure 1. Percentage of Pekka characteristics based on age indicators

Based on the diagram above, the results of research on the characteristics of respondents based on age indicators note that the percentage of ages aged 22-42 years by 39 percent. According to the World Health Organization (WHO) in 2016 stated that the average life expectancy of women up to the age of 74 years. Age 43-63 years by 50 percent, while ages 64-74 years by 11 percent.

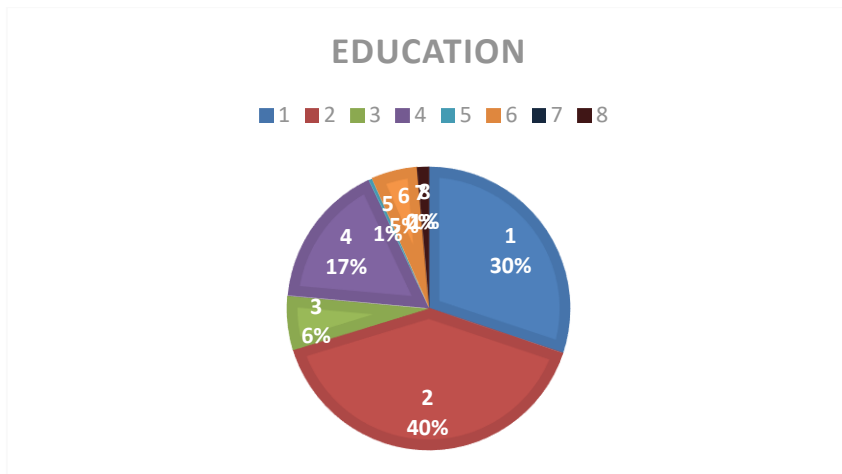


Figure 2. Percentage of Pekka characteristics based on education indicators

Based on the diagram above, the results show that the majority of Pekka educated in Elementary School (40%), and the second-highest percentage was not completing Elementary School. The number of Pekka that did not finish junior high school (6%), while the number of Pekka who graduated junior high school (17%). The number of Pekka that did not graduate from High School (1%), while Pekka who was able to study up to High School (5%). There is no Pekka with a diploma level of education (0%), while those who can attain education up to undergraduate level reach (1%).

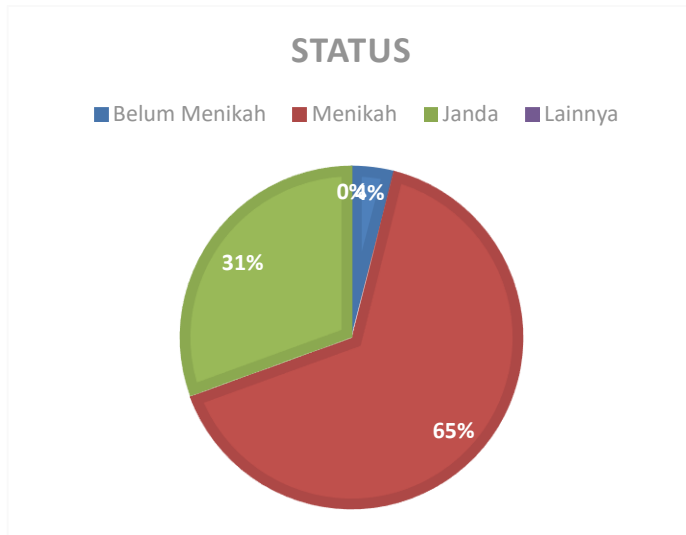


Figure 3. Percentage of Pekka characteristics based on marital status

The results show that most Pekka members still have husbands, and they are permitted by their husbands to enter the Pekka group (65%). Pekka members with widowed status show figures (31%) and Pekka members with a single status (4%).

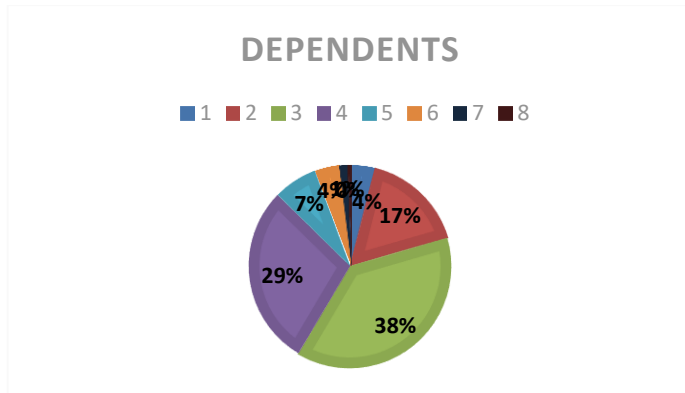


Figure 4. Percentage of Pekka characteristics based on number of family dependents

The results show that most Pekka members still have three family dependents (38%). The results show (29%) with four dependents. The results show (17%) with two dependents. Dependents of 5 people show results (7%), while for dependents, six people there (4%), and dependents of 7 people there (4%), and for dependents, eight people show results do not exist (0%).

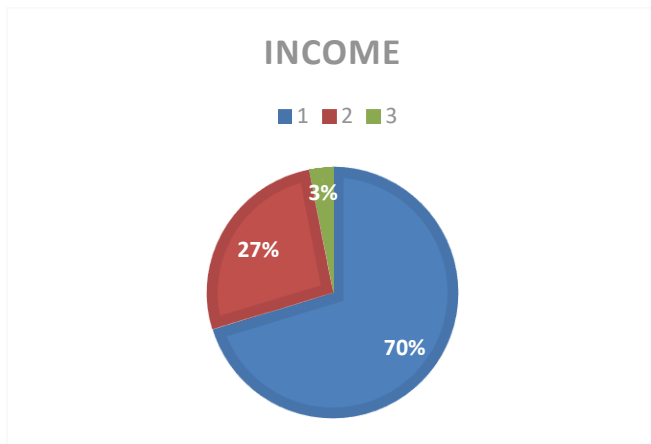
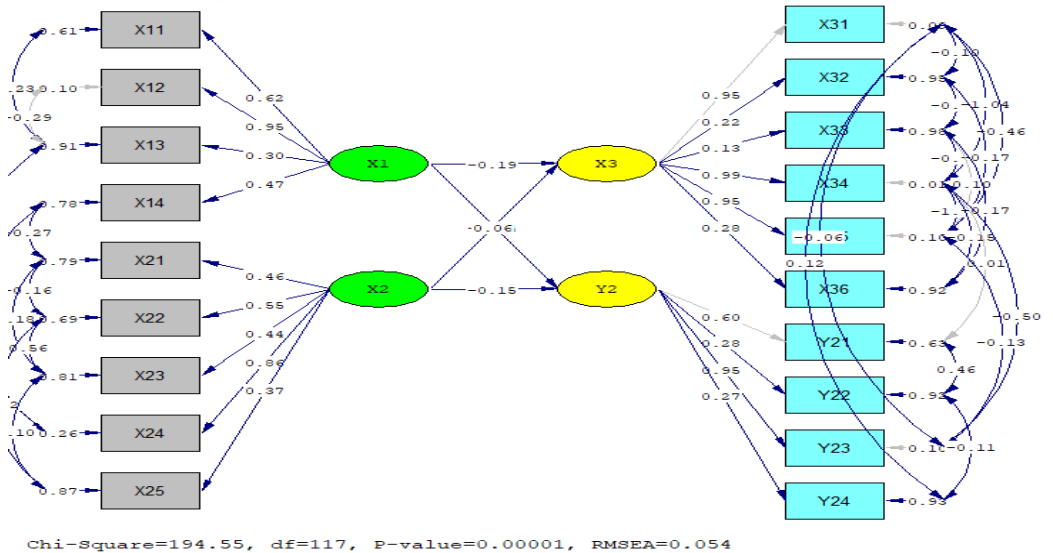


Figure 5. Percentage of Pekka characteristics based on the amount of family income

The term income on characteristics is used on the grounds that most respondents' jobs have precarious work, so it is not based on work, but is based more on income. The results show that most Pekka members have an income of ≤ Rp. 500,000-900,000 (70%). Family income with an income of Rp. 1,000,000-2,000,000 (27%). The remaining Pekka with income of Rp. 2,000,000 only (3%).

SEM Analyst Results The Effect of Pekka Characteristics and Group Characteristics on Participatory Communication and Economic Independence²¹

Estimate (Loading Factor)



Coefisien β^2 , df = 117, $p \geq 0.05 = 0,054$

Figure 6.
T-Test

Pekka economic empowerment communication model, through participatory group communication, to realize Pekka's economic independence in Batang

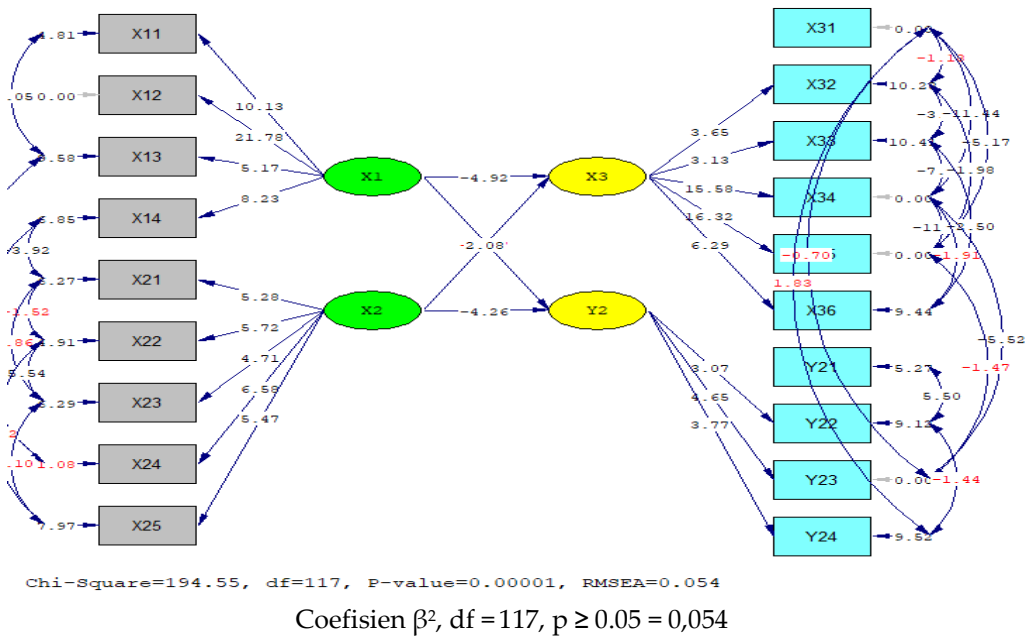


Figure 7. Pekka economic empowerment communication model, through participatory group communication to realize Pekka's economic independence in Batang

Tabel 1 Testing the goodness of fit model 2019

Goodness-of-Fit	Cutt-off-Value	Result	Conclusion
X ² - Chi-square	Expected to be small	194.55	Not goodness of fit
Significance	≥ 0.05	P = 0.0001	
RMSEA	≤ 0.08	0.054	goodness of fit
GFI	Approaching 1	0.94	goodness of fit
NFI	Approaching 1	1.00	goodness of fit
CFI	Approaching 1	1.00	goodness of fit

In Table 1 above, the results of processing for the goodness of fit test show that by using the Chi-square test the conclusion is $p\text{-value } 0.0001 < 0.05$ so that H_0 is rejected and H_a is accepted, which means the resulting model shows that the model is not good yet we can see the goodness of fit others because chi-square is influenced by data and models. In addition, SEM provides an alternative to using other goodness of fit indicators. RMSEA criteria produce a value of 0.054 0.08, which means that the resulting model is already goodness of fit.

The use of other goodness of fit criteria, namely GFI, NFI, and CFI, produces a value > 0.9 , which means that the resulting model has the goodness of fit. Because the results of the conclusions of several indicators produce the conclusion of the model of the goodness of fit, the theoretical hypothesis testing can be done.

Hypothesis testing theory

Table 2 Results of Regression Estimation Model SEM 2019

Path	Estimate	S.E.	t-hit > 1.96	Conclusion
Langsung				
X1 -> X3	-0.190	0.038	4.92	Significant
X2 -> X3	-0.038	0.039	0.97	Significant
X1 -> Y2	0.062	0.030	2.08	Significant
X2 -> Y2	-0.150	0.035	4.26	Significant

Hypothesis 1 states that the characteristics of Pekka (X1) have a direct negative effect on participatory group communication (X3). From the processing results obtained, an estimated coefficient of -0.190, which means that the higher the characteristics of Pekka (X1), the lower the group participatory communication (X3) directly and vice versa. These results indicate that the proposed theoretical hypothesis is proven with a statistic value of $4.92 > t\text{-table } 1.96$, which means that H_0 is rejected so that it can be concluded that there is a positive influence of Pekka's characteristics (X1) on participatory communication groups (X3).

Hypothesis 2 states that group characteristics (X2) do not have a direct negative effect on participatory communication (X3). From the processing results obtained, an estimated coefficient of -0.038, which means that the higher the characteristics of the group (X2), the lower the participatory communication of the group (X3) directly and vice versa. These results indicate that the proposed theoretical hypothesis is proven with a statistic value of $0.97 < t\text{-table } 1.96$, which means that H_0 is accepted so that it can be concluded that there is no negative effect of group characteristics (X2) on participatory communication of groups (X3).

Hypothesis 3 states that the characteristics of Pekka (X1) have a direct positive effect on economic independence (Y2). From the processing results obtained, an estimated coefficient of 0.062, which means that the higher the characteristics of Pekka (X1), the higher the economic independence (Y2) directly and vice versa. These results indicate that the proposed theoretical hypothesis is proven with a statistical value of $2.08 > t\text{-table } 1.96$, which means that H_0 is rejected so that it can be concluded that there is a positive influence of Pekka's characteristics (X1) on economic independence (Y2).

Hypothesis 4 states that group characteristics (X2) have a direct negative effect on economic independence (Y2). From the processing results obtained, an estimated coefficient of -0.150, which means that the higher the characteristics of the group (X2), the lower the economic independence (Y2) directly and vice versa. These results indicate that the proposed theoretical hypothesis is proven with a statistic value of $4.26 > t\text{-table } 1.96$, which means that H_0 is rejected so that it can be concluded that there is a negative influence of group characteristics (X2) on economic independence (Y2).

This study using participatory communication theory showed significant results. Pekka's characteristics have an indirect negative influence on participatory communication and economic independence. Age is one of the social factors that influence human activities in working to meet the needs of daily life. Age is one of the characteristics of respondents that is very important to know. Age indicators have a direct negative effect on participatory communication and business independence. That is, the lower the age of the individual will affect participatory communication and economic independence. This is in line with Noviani's (Noviani, 2015) research, which revealed that the level of participation of members in the elderly tends to be in a low category. This shows that the age variation in the old category is not related to the level of one's participation in participatory communication. Likewise, vice versa, participatory individuals with young categories are expected to be

able to maximize participatory communication to support economic independence.

Education is one of the main indicators of development to create quality human resources. Formal education in research is measured by the number of years of informal education. The opinion of Angeningsih (Angeningsih, 2008) formal education is a major prerequisite in economic development and human resources. Through education, large social benefits can be obtained for survival, such as obtaining employment, quality in insight, health, and the environment. Educated people will be more productive and be able to think to act in problem-solving and decision making.

When linked to research, education indicators have a significant direct negative effect on participatory communication and economic independence. Pekka members, on average, have low education, with the most percentage (40%) of Pekka members graduating from Elementary School. This means that Pekka's involvement in creating participatory communication and economic independence is influenced by the education of Pekka members.

In the field findings, it can be concluded that Pekka members who have low education tend to be less active in every meeting held, in contrast to Pekka members who have higher education tend to be more active in delivering ideas or ideas of this statement in line with the results of Kurniawati's research (Kurniawati, 2010) which states that education formal high can create community independence, and vice versa.

In line with this, based on the results of interviews in the field with community leaders as informants who came from the Writing Village said that:

"..The people here do not prioritize formal education. The mindset that education is not a priority that must be met. They only think that the main thing is to meet basic needs, food, clothing, and shelter. In addition to the lack of fees for formal education and livelihoods, the majority of whom are farmers, farm laborers, domestic workers, factory workers, and small traders. Making them does not require the public to get high formal education. This is because there are no fees. It is hoped that the existence of Pekka in this village will be able to change the mindset of the community so that they feel important with formal education so that they are better able to improve their standard of living when linked to research, education indicators have a significant direct negative effect on participatory communication and economic independence. Pekka members, on average, have low education, with the most percentage (40%) of Pekka members graduating from Elementary School. This means that Pekka's involvement in creating participatory communication and economic independence is influenced by the education of Pekka members. In the field

findings, it can be concluded that Pekka members who have low education tend to be less active in every meeting held, in contrast to Pekka members who have higher education tend to be more active in delivering ideas or ideas of this statement in line with the results of Kurniawati's research (2010) which states that education formal high can create community independence, and vice versa. In line with this, based on the results of interviews in the field with community leaders as informants who came from the Writing Village said that:."

The explanation by one of the informants from the Writing Village above confirmed the data contained in the Writing Subdistrict in July 2019, where the majority of the inhabitants of the Writing Village were livelihoods as farmers, farm laborers, domestic workers, factory workers, and small traders who did not require the community received higher education and has the skills for his job

Based on the results of the FGD conducted in the field that in the Subdistrict of this community, the people prioritize prestige in having a nice house rather than receiving a higher education. It can also be seen directly by researchers, that the condition of houses in the Subdistricts of Write and Kandeman people have permanent, good and modern-looking houses. The walled house, magnificent, has a variety of tiles, more modern home design. But for the case of formal education with a higher level of education, they feel it is not a priority to be obtained in improving living standards. It is hoped that with the presence of Pekka, it will be able to arouse more advanced thinking power.

The indicator of the number of dependents has a direct negative effect on participatory communication and economic independence. This means that the lower the responsibility of Pekka groups will have an influence on creating participatory communication and economic independence. A condition where the burden of responsibilities of housewives who also hold responsibilities as head of the family has family responsibilities. Such conditions were strengthened by the results of interviews with community leaders at the FGD.

"Usually, PEKKA women have a higher responsibility in meeting the needs of their family life, compared to their husbands. Their husbands actually seem to be the wife who helps their husbands in making a living is the main thing, as well as meeting all the needs of the family they bear. Based on findings in the field that women (housewives who also work as breadwinners, finally their roles are shifted as the head of the family because all problems and decisions in problem-solving are carried out by the wife and husband as if they are free from their responsibilities...."

Finally, the income indicator has a significant direct negative effect on participatory communication and economic independence. As it is known, the income of Pekka members is in the low category with a percentage (70%) with an average salary of Rp 500,000 - 900,000 due to the low income of Pekka members who are less able to maximize business capital even though they often participate in training in Pekka programs as an effort to economic independence. However, group members have been able to maximize their daily basic needs by utilizing vacant land next to the house to plant vegetables or other natural resources such as cassava, bananas, and breadfruit which is then made into chips or other processed foods such as *peyek*, *tempe chips*, know to be entrusted to stalls in supporting their income.

Judging from the results of group characteristics has a direct negative influence on participatory communication and economic independence. This is different from Firmansyah (Firmansyah, 2012) saying, the facilitator or facilitator of the empowerment program really determines the level of community empowerment that is the target of the program. Without the presence of a companion, the community will find it difficult to carry out activities due to various limitations they have. The reality is that some Pekka groups are still unable to implement the training that has been conducted. This is in line with Listiana's research (Listiana, Sumardjo, Sadono, & Prabowo, 2018), which states that the role of counterpart will influence IR (Home Industry) actors to participate in the implementation of programs implemented in order to improve their skills and business development.

In line with this statement, Ife (Ife, 2014) states that the success of participatory communication in cultural renewal through a dialogic process depends very much on the role of the facilitator as the initiator and planner. This means that the facilitator is considered to have a considerable role in creating participatory communication and the economic independence of Pekka members. If it is related to research, assistance to Pekka Batang is quite good in delivering direct messages (linear) that contain elements of instruction (direction) about the activities to be carried out, but Pekka groups sometimes still want two-way (convergent) information where messages are delivered according to the potential, conditions, local specific needs of women-headed household groups and the delivery of information should consider the needs and wants of women-headed household groups. Therefore, the improvement must be carried out continuously by the facilitator to maximize the delivery of information and build the skills of Pekka groups, based on the findings which hampered the information provided by the facilitators due to the low level of activeness of group members in accessing mass and electronic media, group

members Pekka relies more on direct communication in various activities and meetings, this is an obstacle in the delivery of information in Pekka groups.

In addition, the findings in the study also show that there is still a lack of trust among group members to the management and also cadres, based on the results of categorization and associated with SEM analysis, it can be concluded that group members trust trustees to overcome and provide solutions related to personal or group problems. This is thought to be the cause of group characteristics having a negative influence on participatory communication and economic independence. Therefore, the development of cadre roles and functions needs to be carried out optimally. In addition to the needs of the group, this will also help to create many active and competent Pekka members in overcoming various personal problems or problems in the group.

Conclusion

Based on the results of the research, it can be concluded that the age of Pekka members is in the range of 22-63 years with the highest level of education in elementary school (70%) who is married (65%), and has a maximum of 3 dependents (35%) and has revenue in the range (Rp.500-000-900,000). Based on the categorization, it can be concluded that the characteristics of the groups are in a low category, Pekka groups are still very dependent on the role of assistants both in training and economic independence due to the still low access to information and education of most Pekka groups. Participatory communication belongs to the high category with the highest dimension in the leadership role dimension. This means that the Pekka group already has a leadership spirit but is still constrained by access to ideas and ideas as well as dialogue and direction of communication, which is still one-way. Based on economic independence in the low category. Pekka members are still hampered in capital and skills that they feel are still lacking.

The results of the SEM analysis show that the characteristics of Pekka (X1) affect participatory communication (X3) and the characteristics of Pekka (X1) most influential on participatory communication (X3). A negative value of -0.190 which indicates that the higher the characteristics of Pekka (X1), the lower the participatory communication (X3) that occurs. The results from above also show that the characteristics of the group (X2) have the most influence on economic independence (Y2) compared to the characteristics of women

household heads (X1). A negative value of -0.150 indicates that the higher the group characteristics (X2), the lower economic independence (Y2) occurs.

Suggestion

Based on the conclusions presented, the authors formulated suggestions to the facilitator to actively develop the role of groups, cadres, and administrators to create a harmony of information and skills in Pekka groups that leads to the creation of two-way communication, especially for members who have low education and are elderly. In addition, the facilitator should also develop training on a scale basis for all Pekka groups so that members have the desire to become more independent in the future.

References

- Andreas, J. (2018). *Laju pengentasan kemiskinan global masih lambat*. Retrieved Januari 30, 2019, from <http://tirto.id/bank-duni``a-laju-pengentasan-kemiskinan-global-masih-lambat-c6wG>
- Angeningsih, L. (2008). Peran balai latihan kerja (BLK) dalam penanggulangan kemiskinan (Suatu kajian nilai sosial). *Jurnal Ilmu Sosial Alternatif, IX*(2), 96-112.
- Astuti, F. (2014). *Hubungan karakteristik sosial ekonomi terhadap alokasi pengeluaran wanita kepala rumah tangga di DIY (Analisis Susenas Tahun 2005 dan 2010)*. Yogyakarta: UGM.
- Badan Pusat Statistik Kabupaten Batang. (2018). *Kabupaten Batang dalam Angka "Batang Regency in Figures*. Retrieved April 28, 2019, from <https://Batangkab.bps.go.id>.
- Creswell, J. W. (2010). *Research Design: Pendekatan Kualitatif, Kuantitatif, dan Mixed*. Yogyakarta: PT Pustaka Pelajar.
- Djazimah, S., & Habudin, I. (2016). Isteri sebagai pencari nafkah utama: studi terhadap perajin kapuk di Desa Imogiri, Bantul, Yogyakarta. *Jurnal Hukum Keluarga Islam, xi*(i), 47-65.
- Firmansyah, H. (2012). Tingkat Keberdayaan Masyarakat dalam Program Pemberdayaan Masyarakat di Kota Banjarmasin dan Kabupaten Tanah Laut. *Jurnal Agribisnis Pedesaan*.
- Hubeis, A. (2010). *Pemberdayaan Perempuan dari Masa ke Masa*. Bogor: IPB Press.

- Ife, J. (2014). *Alternatif Pengembangan Masyarakat di Era Globalisasi "Community Development"*. Yogyakarta: Pustaka Belajar.
- Kurniawati, D. (2010). Tingkat Partisipasi dan Kemandirian Masyarakat dalam Bidang Ekonomi Program Posdaya (kasus Posdaya Bina Sejahtera Kelurahan Pasir Mulya Kota Bogor). *Jurnal Penyuluhan*, VI(2).
- Listiana, I., Sumardjo, Sadono, D., & Prabowo, T. (2018). Hubungan Kapasitas Penyuluh dengan Kepuasan Petani dalam Kegiatan Penyuluhan. *Jurnal Penyuluhan*, XIV(2), 244-256.
- Noviani, A. (2015). Hubungan Antara Tingkat Partisipasi Anggota dengan Kelancaran Program Tabur Puja di Posdaya Sejahtera, Kota Bogor. *Jurnal Komunikasi Pembangunan*, 1(3).
- Sasmita, S. (2011). Peran perempuan suku minangkabau yang menjadi kepala keluarga (pekka) bagi penciptaan ketahanan pangan rumah tang ga di kecamatan padang timur. *Jurnal Ilmiah Ilmu-Ilmu Humaniora*, I, 82-92.
- Singarimbun, M., & Effendy, S. (2002). *Metode Penelitian Survei*. Jakarta: LP3ES.
- Sugiyono. (2013). *Metode Penelitian Kuantitatif, Kualitatif dan R&D*. Bandung: cv. Alfabeta.
- Suhaimi, A. (2016). *Pengembangan dan Pemberdayaan Masyarakat*. Yogyakarta: Deeeepublish.
- Wibawa, P. R., & Wihartanti, V. L. (2018). Strategi perempuan kepala keluarga (pekka) dalam menciptakan kemandirian ekonomi keluarga di desa gesi kecamatan gesi kabupaten sragen. *Jurnal Pendidikan Ekonomi UM*, VI(2), 57-62.

JURNAL

CITA HUKUM

INDONESIAN LAW JOURNAL

TECHNICAL GUIDANCE FOR AUTHORS OF CITA HUKUM JOURNAL

1. Article must be original, not plagiarism, unpublished, and not under review for possible publication in other journals.
2. Article should be concept, research-based, and thoughts;
3. Article should be written in English
4. Article must contain of Law Science
5. Writing Guidance as follows:
 - a. Title is written by Capital maximum 12 words in the center
 - b. Name of authors are written completely, no degree, institutional affiliation, address, and email.
 - c. Abstract is written in English maximum 250 words.
 - d. Systematycs of article:
 - 1) Title
 - 2) Name of authors (no title), name of affiliation, email
 - 3) Abstract
 - 4) Keywords, between 3-5 words
 - 5) Introduction
 - 6) Sub title (if need it)
 - 7) Closing
 - 8) Bibliography (The bibliography list contains all references in text originating from sources that are relevant and at least up to date (last 10 years).
 - e. Paper Sizes are 17,5 X24 cm, up 2,5 cm, down, 2,5 cm, right 2,5 cm, and left 2,5 cm
 - f. Length of article is between 18 – 20 pages with 1.0 line spacing, Palatyno Fond Style with 10 size.
 - g. Rule of citation. Direct citation if word is more than 4 lines separated from the text with 1.0 spacing with 9 font. However if citation less than 4 lines, it should be integrated in the text with double apostrof both in the first and in the end. Every citation is given number. Citation system is body note and use turabia system. Every article, book, and other source should be cited on the reference.
 - h. Citation for Quran and Hadist. For verse citation contains name of surah, number of surah and number of verse example: (Qs. Al Mumin [40]: 43). For Hadis citation, mention name of Perawi/Author, example (H. R al-Bukhari and Muslim) and printed hadist version. Hadist must be from standar hadist books (Kutub at-Tisah).

Technical Guidance for Authors of CITA HUKUM JOURNAL

- i. Bodynote is written by Palatino Linotype style, size 10, for any sources as: (Yunus, 2014: 144).
 - j. Bibliography. Bibliography is written alphabetically, last author's name is in the first of name, example:
 - 1) Book: Soekanto, S. *Pokok-Pokok Sosiologi Hukum*, Jakarta: Rajawali Press, 1986.
 - 2) Translated Book. Example: Pound, R. *Pengantar Filsafat Hukum: Book III*, translated by Moh. Radjab, Jakarta: Bharata, 1963.
 - 3) Journal, example: Rohim, N. "*Kontroversi Pembentukan Perppu No. 1 Tahun 2013 tentang Mahkamah konstitusi dalam ranah kepentingan yang memaksa*", *Jurnal Cita Hukum*, Volume 2 Number 1 (2014).
 - 4) Article as a part of book (antology). example: Juwana, H. "*Penegakan Hukum dalam Kajian Law and Development: Problem dan Fundamen bagi Solusi Indonesia*", in Muhammad Tahir Azhary, *Beberapa Aspek Hukum Tata Negara, Hukum Pidana, dan Hukum Islam*, Jakarta: Kencana Prenada Media Group, 2012.
 - 5) Article from internet, example: Kharlie, Ahmad Tholabie, "*Problem Yuridis RUU Syariah*" in <http://ahmadtholabi.com/2008/03/03problem-yuridis-ruu-syariah>, downloaded on March 20, 2012.
 - 6) Article from magazine, example: Susilaningtias, "*Potret Hukum Adat pada Masa Kolonial*," in *Forum Keadilan*, No. 17, August 20, 2016.
 - 7) Article in Seminar, example: Asshidiqqie, Jimly, "*Kedudukan Mahkamah Konstitusi dalam Struktur Ketatanegaraan Indonesia*," paper presented on public lecture at faculty of law Universty Sebelas Maret, Surakarta on March 2, 2014.
 - k. Closing, article is closed by conclusion;
 - l. Short biography: author's biography contains full name, title, institution, education and other academic experts.
6. Every article that doesnt fulfill all requirements to this guidance will give it back to the author for revision.
 7. Article must be submitted to editors at least 3 months before publishing (April, August, and December) with uploading via OJS to <http://journal.uinjkt.ac.id/index.php/citahukum> or e-mail to jurnal.citahukum@uinjkt.ac.id.[]

in Collaboration with :



Indexed by :



Universiteit
Leiden



JURNAL CITA HUKUM is a peer-reviewed journal on Indonesian Law Studies published bi-annual (June & December) by Faculty of Sharia and Law Universitas Islam Negeri Syarif Hidayatullah Jakarta in cooperation with Center for the Study of Constitution and National Legislation (POSKO-LEGNAS). JURNAL CITA HUKUM aims primarily to facilitate scholarly and professional discussions over current developments on legal issues in Indonesia as well as to publish innovative legal researches concerning Indonesian laws.

